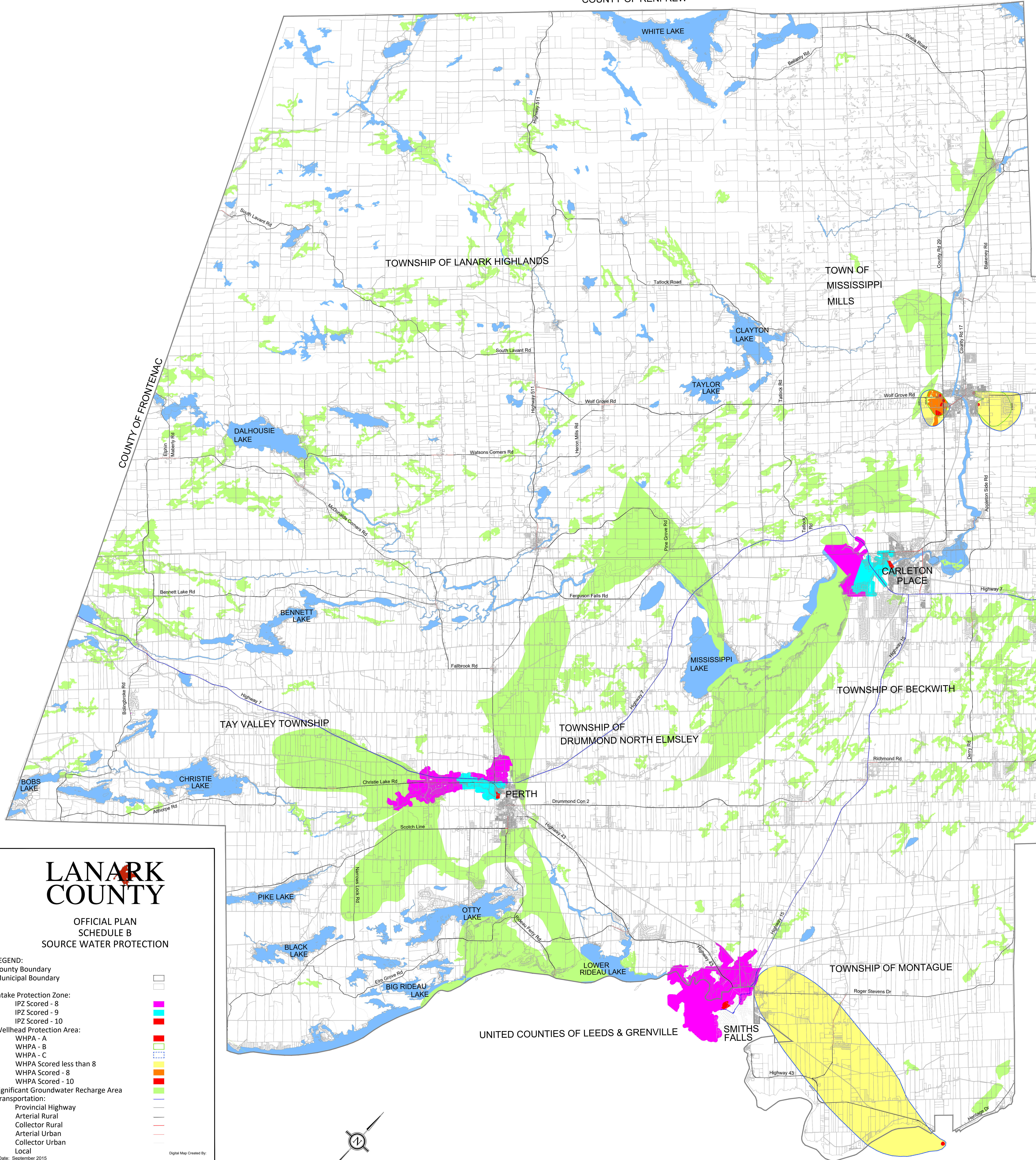


COUNTY OF RENFREW

COUNTY OF FRONTENAC

CITY OF OTTAWA



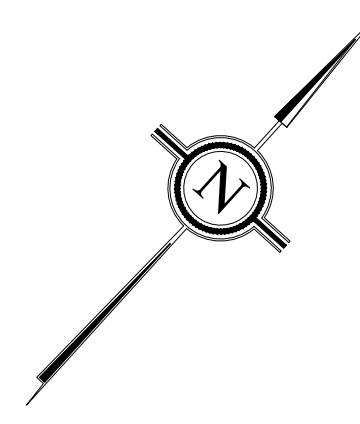
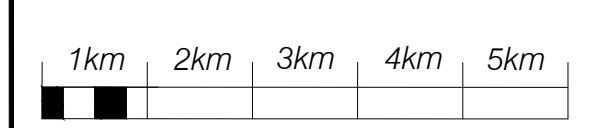
LANARK COUNTY

OFFICIAL PLAN SCHEDULE B SOURCE WATER PROTECTION

- LEGEND:**
- County Boundary
 - Municipal Boundary
 - Intake Protection Zone:
 - IPZ Scored - 8
 - IPZ Scored - 9
 - IPZ Scored - 10
 - Wellhead Protection Area:
 - WHPA - A
 - WHPA - B
 - WHPA - C
 - WHPA Scored less than 8
 - WHPA Scored - 8
 - WHPA Scored - 10
 - Significant Groundwater Recharge Area
 - Transportation:
 - Provincial Highway
 - Arterial Rural
 - Collector Rural
 - Arterial Urban
 - Collector Urban
 - Local



Digital Map Created By:
CGIS Spatial Solutions
32 South Street
Perth, ON K7H 2G7
TEL: 613-368-4321
www.cgis.com



Date: September 2015
Note: The base information on this plan was prepared from a variety of map sources and was used by permission of the County of Lanark. It is not a legal plan of survey. For precise location of plan features recourse should be had to the original source data.