

Scale 1:250



Metric
DISTANCES SHOWN ON THIS PLAN ARE IN METRES AND CAN BE CONVERTED TO FEET BY DIVIDING BY 0.3048

Notes & Legend

- MF Denotes Metal Fence
- CLF Chain Link Fence
- LS Light Standard
- WRW Wooden Retaining Wall
- CRW Concrete Retaining Wall
- x 89.00 Existing Elevations

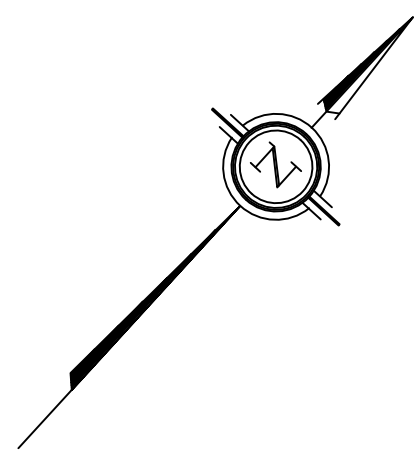
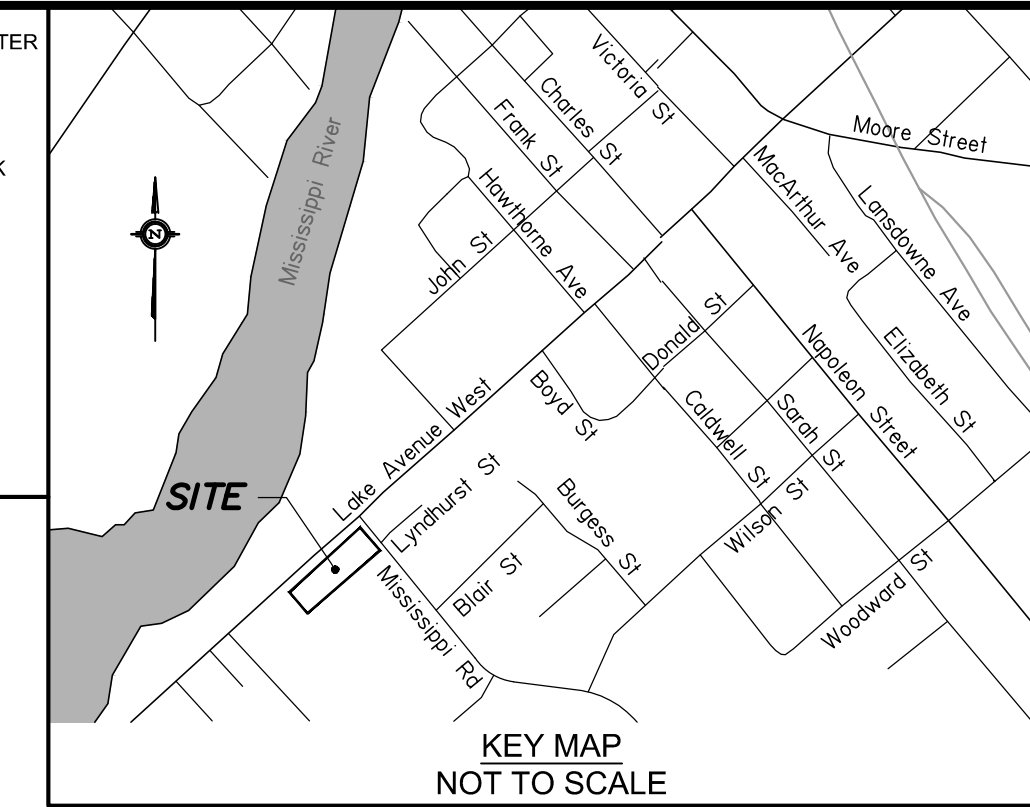
ELEVATION NOTES

1. Elevations shown are geodetic and are referred to the CGVD28 geodetic datum.
2. It is the responsibility of the user of this information to verify that the job benchmark has not been altered or disturbed and that its relative elevation and description agrees with the information shown on this drawing.
Distances shown on this plan are ground distances and can be converted to grid distances by multiplying by the combined scale factor of 0.99991.
Bearings are grid, derived from the southerly limit of Lake Avenue West shown to be N47°32'20"E on Plan 27R-11832 and are referenced to MTM Zone 9 (76°30' West Longitude) NAD-83 (CSRS)(2010).

SUBJECT TO THE CONDITIONS, IF ANY, SET FORTH IN OUR LETTER DATED

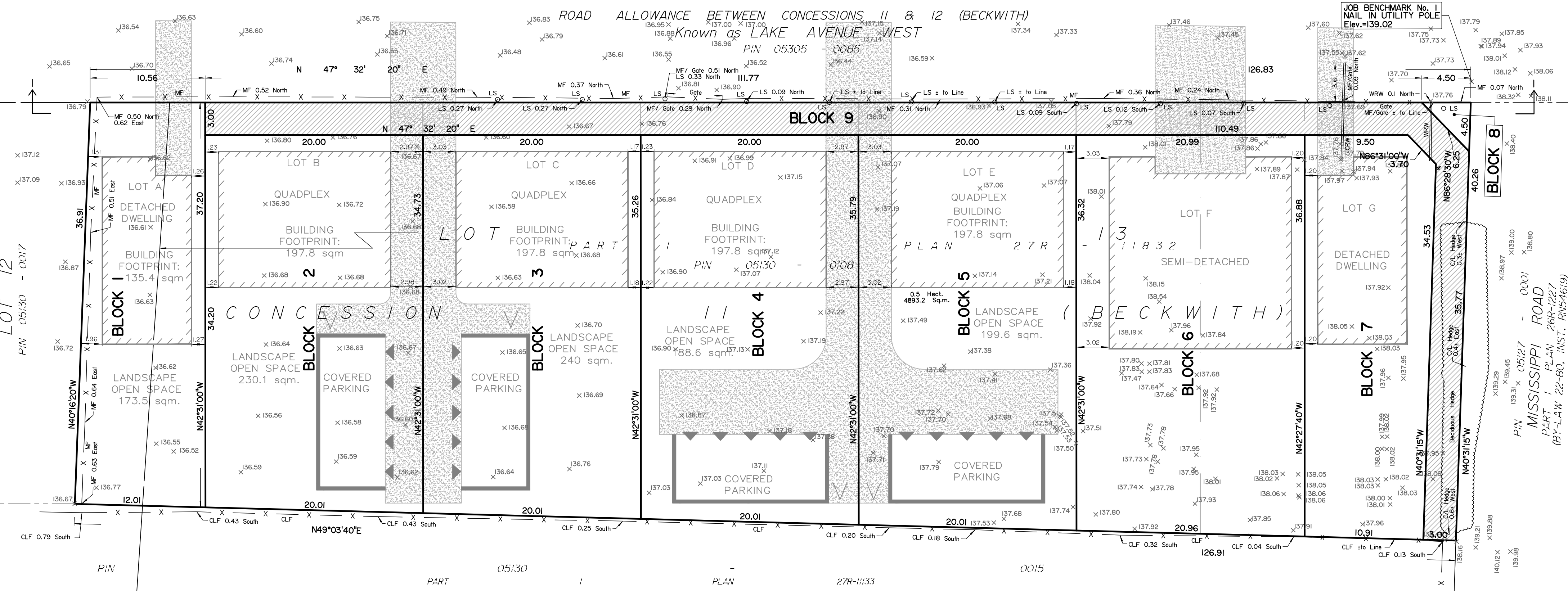
THIS DRAFT PLAN IS APPROVED BY THE COUNTY OF LANARK UNDER SECTION 51 OF THE PLANNING ACT. THIS DAY OF 20__

KURT GREAVES
CHIEF ADMINISTRATIVE OFFICER
COUNTY OF LANARK



JOB BENCHMARK No. 2
NAIL IN UTILITY POLE
Elev.=137.67

EXISTING RESIDENTIAL LOT 12



JOB BENCHMARK No. 1
NAIL IN UTILITY POLE
Elev.=139.02

DRAFT PLAN OF SUBDIVISION OF PART OF LOTS 12 AND 13 CONCESSION 11
Geographic Township of Beckwith
TOWN OF CARLETON PLACE
COUNTY OF LANARK
Prepared by Annis, O'Sullivan, Vollebek Ltd.

SURVEYOR'S CERTIFICATE

I CERTIFY THAT:
The boundaries of the lands to be subdivided and their relationship to adjoining lands have been accurately and correctly shown.

Date _____ Andrew J. Broxham
Ontario Land Surveyor

OWNER'S CERTIFICATE

This is to certify that we are the owners of the lands to be subdivided and that this plan was prepared in accordance with our instructions.

Date _____ Nathan Adams
Date _____ Tammy Adams
Date _____ Anne Winch
We have authority to bind the corporation.

INSTITUTIONAL

BLOCK	Square Metres
1	418
2	689
3	700
4	711
5	721
6	767
7	424
8	10
9	453
TOTAL	4893

ADDITIONAL INFORMATION REQUIRED UNDER SECTION 51-17 OF THE PLANNING ACT

- (a) see plan
- (b) see plan
- (c) see plan
- (d) see plan
- (e) see plan
- (f) see plan
- (g) see plan
- (h) Development will be supplied with full municipal piped water service
- (i) see soils report
- (j) see plan
- (k) sanitary, storm sewers, municipal water, bell, hydro, cable and gas to be available
- (l) see plan

ANNIS, O'SULLIVAN, VOLLEBEK LTD.
14 Concourse Gate, Suite 500
Nepean, Ont. K2E 7S6
Phone: (613) 727-0850 / Fax: (613) 727-1079
Email: Newplan@annis.com
Job No. 17446-21 EHC PHL 12 C II BE DPS D2 AP