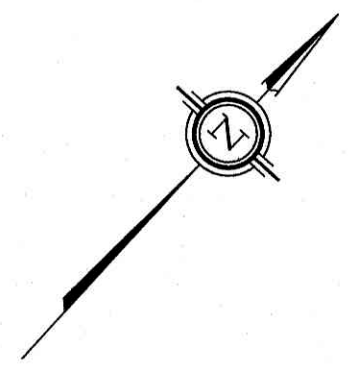


ROAD ALLOWANCE BETWEEN CONCESSIONS 11 & 12 (BECKWITH)
Known as LAKE AVENUE WEST

PIN 05305 - 0085

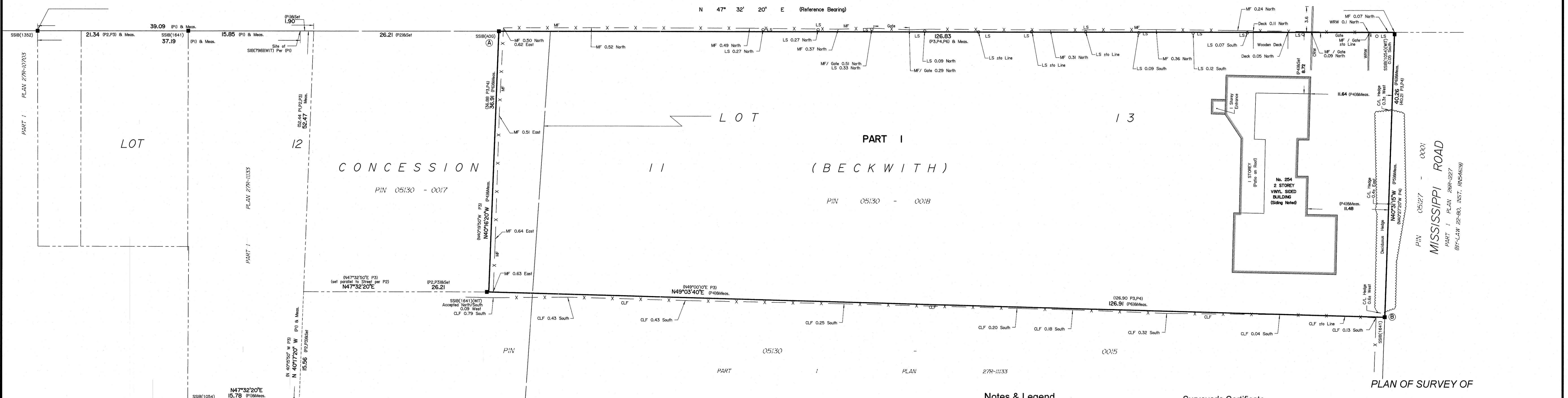


I REQUIRE THIS PLAN TO BE DEPOSITED UNDER THE LAND TITLES ACT.
DATE: _____

ANDREW J. BROXHAM
ONTARIO LAND SURVEYOR

REPRESENTATIVE FOR LAND REGISTRAR FOR THE LAND TITLES DIVISION OF LANARK NO. 27.

SCHEDULE				
AREA (Sq.m.)	PART	LOT	CONCESSION	PIN
4892.3	1	PART OF 12 & 13	11	ALL OF 05130-0018



Distances shown on this plan are ground distances and can be converted to grid distances by multiplying by the combined scale factor of 0.99991.

Bearings are grid, derived from the southerly limit of Lake Avenue West shown to be N47°32'20"E on Plan 27R-10703 and are referenced to MTM Zone 9 (76°30' West Longitude) NAD-83 (CSRS)(2010).

For bearing comparisons, a rotation of 1°04'15" counter-clockwise was applied to bearings on plan P3, 0°23'20" counter-clockwise was applied to bearings on plans P4, P5.

Coordinates are derived from Can-Net 2016 Real Time Network GPS observations and are referred to the Central Meridian of MTM Zone 9 NAD-83 (CSRS) (2010).

Coordinate values are to urban accuracy in accordance with O. Reg. 216/10.

Point A Northing 4999102.74 Easting 332289.77
Point B Northing 4999157.74 Easting 332409.49

Caution: Coordinates cannot, in themselves, be used to re-establish corners or boundaries shown on this plan.

Notes & Legend

□	Denotes	Survey Monument Planted
■	"	Survey Monument Found
SIB	"	Standard Iron Bar
SSIB	"	Short Standard Iron Bar
IB	"	Iron Bar
(WIT)	"	Witness
Meas.	"	Measured
(AOG)	"	Annis, O'Sullivan, Vollebakk Ltd.
(P1)	"	Plan 27R-10703
(P2)	"	Plan 26R-591
(P3)	"	Plan 27R-11133
(P4)	"	(1326) Plan November 24, 1983
(P5)	"	Plan 26R-1227
(P6)	"	(AOG) Plan June 21, 2021
MF	"	Metal Fence
CLF	"	Chain Link Fence
LS	"	Light Standard
WRW	"	Wooden Retaining Wall
CRW	"	Concrete Retaining Wall

Surveyor's Certificate

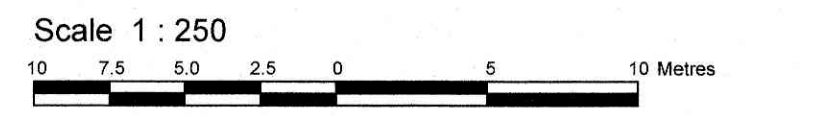
I CERTIFY THAT:

- This survey and plan are correct and in accordance with the Surveys Act, the Surveyors Act and the Land Titles Act and the regulations made under them.
- The survey was completed on the 8th day of June, 2021.

Date: October 25, 2021
Signature: A.J. Broxham
Andrew J. Broxham
Ontario Land Surveyor

PLAN OF SURVEY OF

PART OF LOTS 12 and 13
CONCESSION 11
Geographic Township of Beckwith
TOWN OF CARLETON PLACE
COUNTY OF LANARK
Surveyed by Annis, O'Sullivan, Vollebakk Ltd.



Metric
DISTANCES AND COORDINATES SHOWN ON THIS PLAN ARE IN METRES AND CAN BE CONVERTED TO FEET BY DIVIDING BY 0.3048.