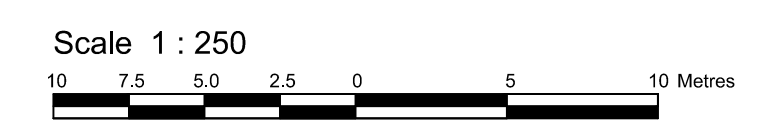


PLAN OF SURVEY OF

EXTENT AND LOCATION OF EXCLUSIVE USE PORTIONS OF THE COMMON ELEMENTS ON LEVEL 1

Surveyed by Annis, O'Sullivan, Vollebek Ltd.



Metric
DISTANCES AND COORDINATES SHOWN ON THIS PLAN ARE IN METRES AND CAN BE CONVERTED TO FEET BY DIVIDING BY 0.3048

NOTES AND LEGEND

- denotes Survey Monument Planted
- denotes Survey Monument Found
- - - - - Property limit
- - - - - Boundary of exclusive use portion
- - - - - Unit boundary below
- SIB Standard Iron Bar
- SSIB Short Standard Iron Bar
- * 0.3m Survey Monument
- Meas. Measured
- (AOG) Annis O'Sullivan Vollebek Ltd.
- VP Vertical Plane
- A See SECTION A-A

SURVEYOR'S CERTIFICATE EXCLUSIVE USE COMMON ELEMENTS

I CERTIFY THAT this plan of survey accurately shows the extent and location of the exclusive use portions of the common elements.

Dated this ___ day of _____ 2023
V. Andrew Shelp
Ontario Land Surveyor

Elevations shown are geodetic and are referred to the top of fire hydrant spindle in front of 218 Lyndhurst Street shown to have an elevation of 141.94 metres (CGVD28 geodetic datum) on plan by Callon Dietz dated December 17, 2020.

Distances shown on this plan are ground distances and can be converted to grid distances by multiplying by the combined scale factor of 0.99991.

Bearings are grid, derived from the southerly limit of Lake Avenue West shown to be N47°32'20"E on Plan 27R-11832 and are referenced to MTM Zone 9 (76°30' West Longitude) NAD-83 (CSRS)(2010).

Coordinates are derived from Can-Net 2016 Real Time Network GPS observations and are referred to the Central Meridian of MTM Zone 9 NAD-83 (CSRS) (2010).

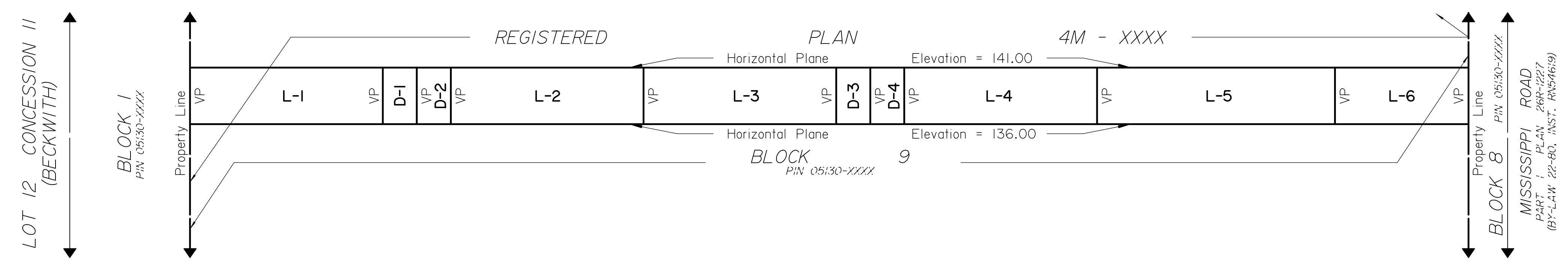
Coordinate values are to urban accuracy in accordance with O. Reg. 216/10.

- . Point A Northing 4999102.74 Easting 332289.77
- . Point B Northing 4999157.74 Easting 332409.49

Caution: Coordinates cannot, in themselves, be used to re-establish corners or boundaries shown on this plan.

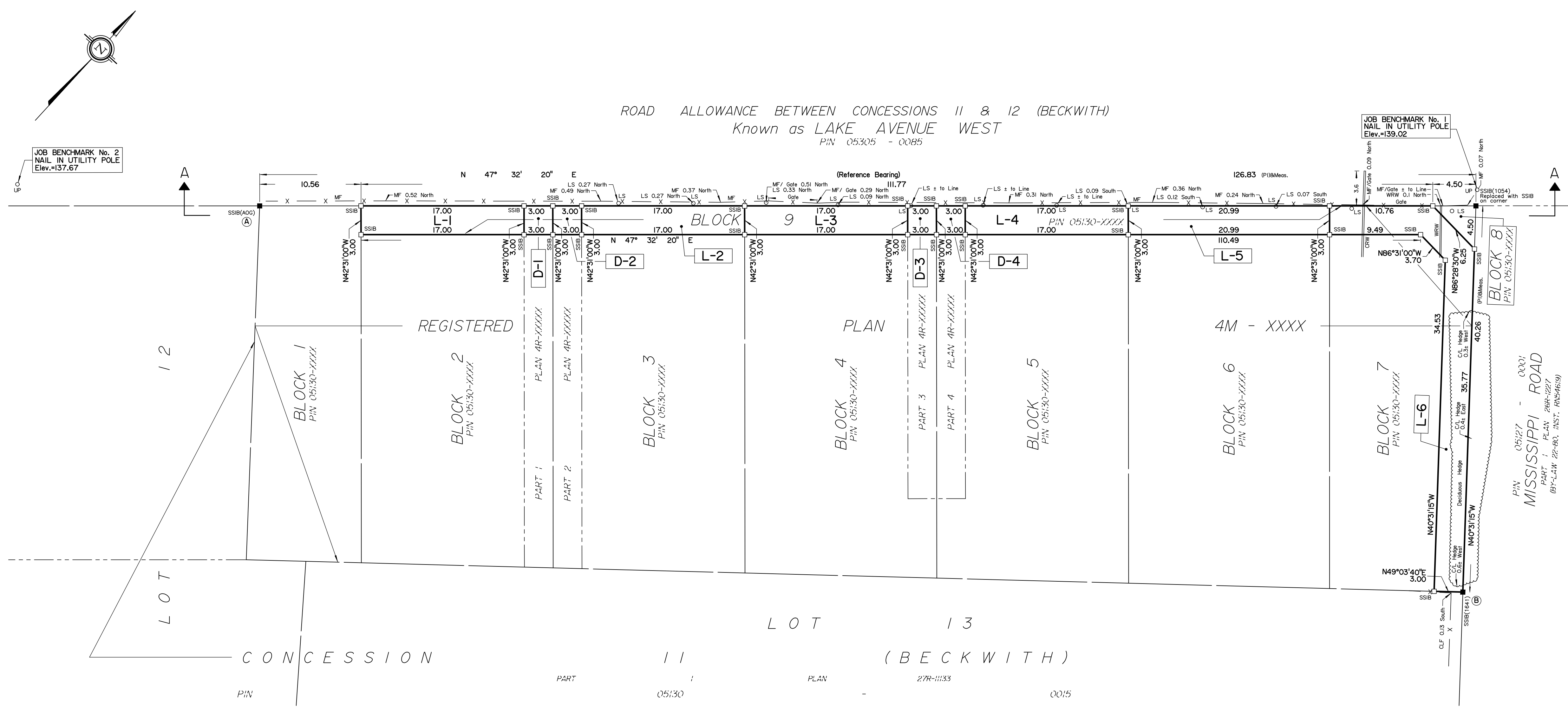
Boundaries of exclusive use portions of the common elements are straight lines unless noted otherwise.

ANNIS, O'SULLIVAN, VOLLEBEK LTD.
14 Concourse Gate, Suite 500
Nepean, Ont. K2E 7S6
Phone: (613) 727-0850 / Fax: (613) 727-1079
Email: Info@aosv.com
Ontario Land Surveyors Job No. 17446-21 ENC. B/A- 4M-XXXX CEC. D1



SECTION A-A
TO ILLUSTRATE BOUNDARIES OF EXCLUSIVE USE PORTIONS L-1 TO L-6 AND D-1 TO D-4 (BOTH INCLUSIVE)

ROAD ALLOWANCE BETWEEN CONCESSIONS 11 & 12 (BECKWITH)
Known as LAKE AVENUE WEST
PIN 05:305 - 0085



PIN 05:30 27R-1133 00:5