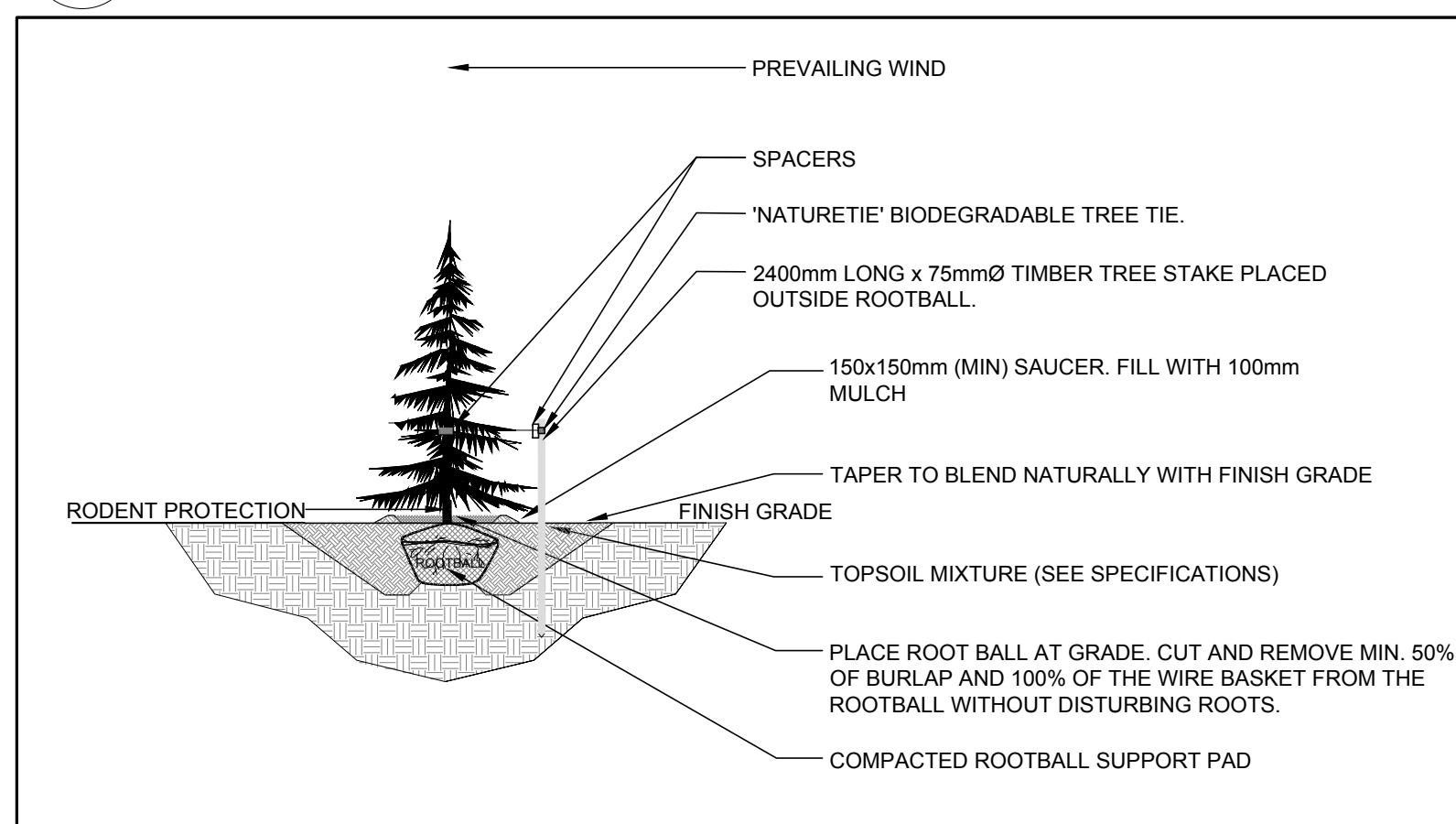
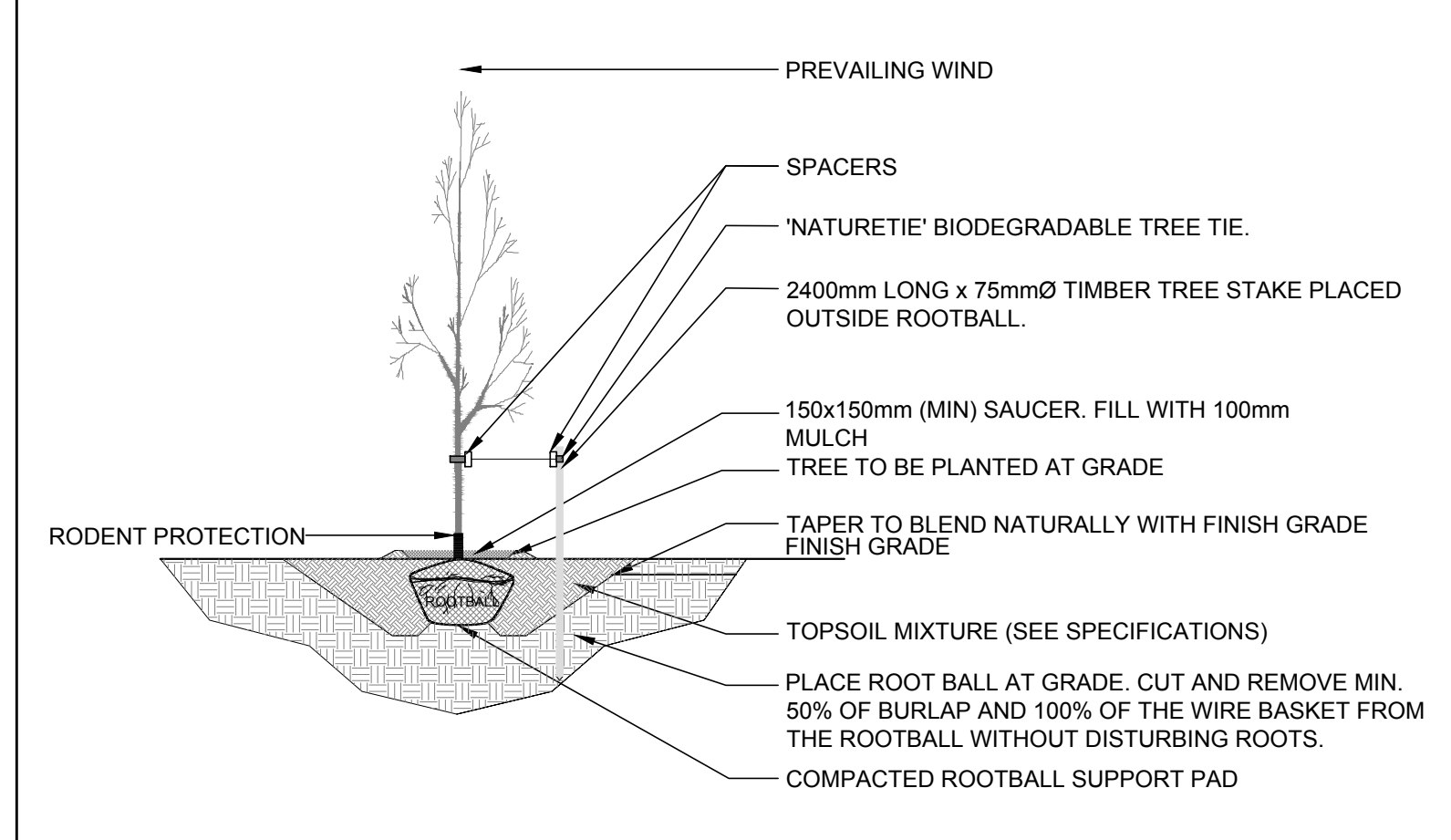
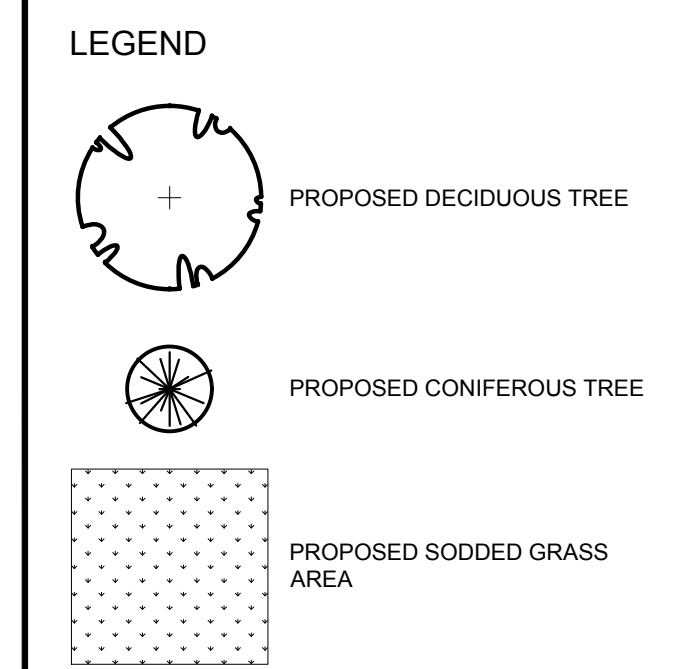


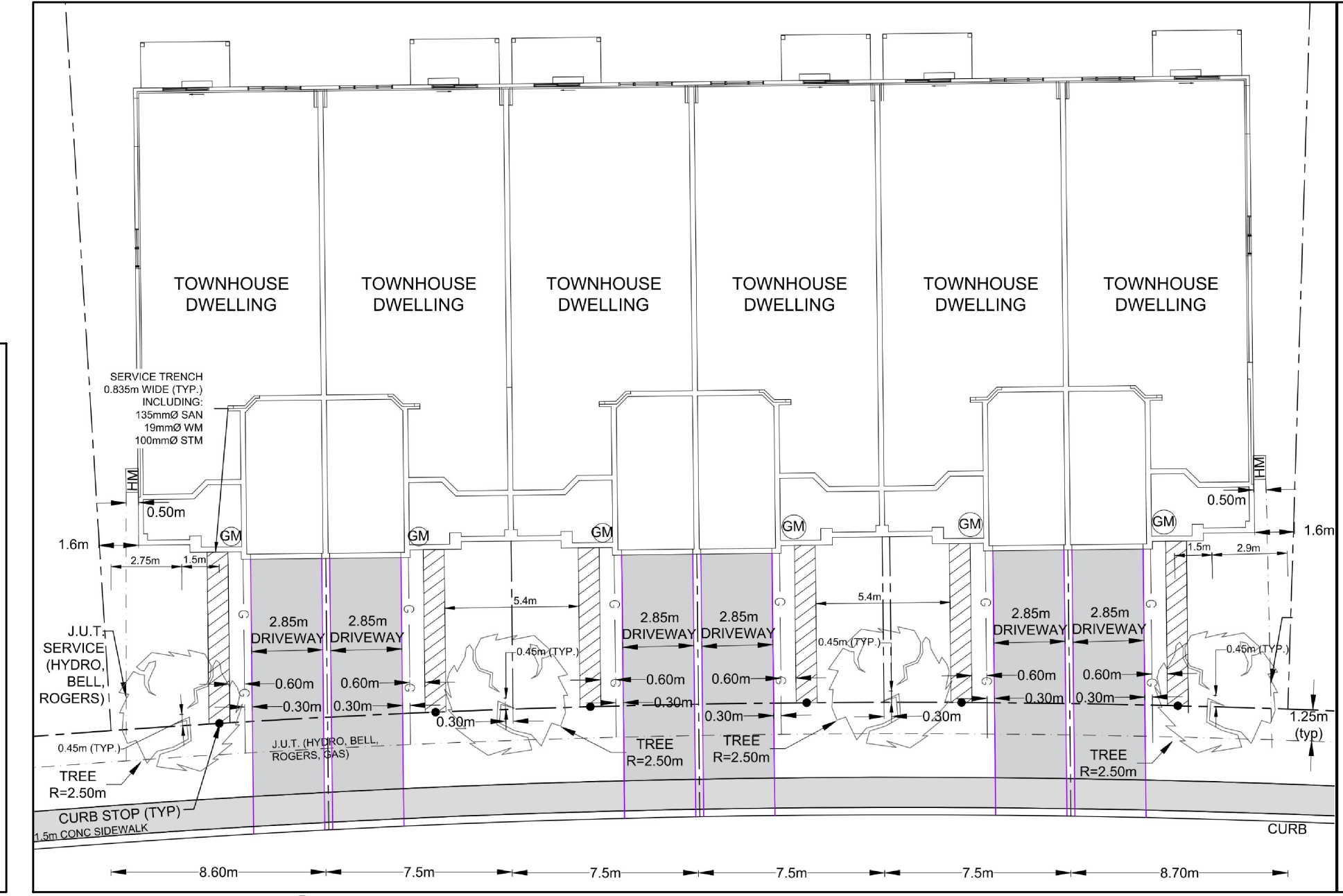
PROPOSED PLANT LIST

KEY	qty.	BOTANICAL NAME	COMMON NAME	SIZE	CONDITION	REMARKS
TREES						
AM	8	Acer ginnala	Amur Maple	60mm cal.	B&B	Single leader
CS	7	Picea pungens	Colorado Spruce	1800mm ht.	B&B	
FM	2	Acer x freemanii	Freeman's Maple	60mm cal.	B&B	
HB	2	Celtis occidentalis	Hackberry	60mm cal.	B&B	
HL	2	Gleditsia triacanthos	Honey Locust	60mm cal.	B&B	
JL	9	Syringa reticulata	Japanese Tree Lilac	60mm cal.	B&B	Single leader
MP	1	Malus 'Profusion'	Profusion Crabapple	60mm cal.	B&B	
MS	1	Malus 'Snowdrift'	Snowdrift Crabapple	60mm cal.	B&B	
SB	8	Amelanchier canadensis	Serviceberry	60mm cal.	B&B	Single leader
SI	2	Acer saccharinum	Silver Maple	60mm cal.	B&B	
WC	5	Thuja occidentalis 'Clumps'	White Cedar Clumps	1800mm ht.	Potted / bare root	
WS	5	Picea glauca	White Spruce	1800mm ht.	B&B	



1 LANDSCAPE PLAN
L.1 SCALE: 1:400

- #### GENERAL NOTES:
- IT IS THE RESPONSIBILITY OF THE APPROPRIATE CONTRACTOR OR OFFICIAL TO REPORT ANY ERRORS, OMISSIONS OR DISCREPANCIES ON THIS PLAN WITH ACTUAL SITE CONDITIONS TO THE LANDSCAPE ARCHITECT BEFORE PROCEEDING WITH CONSTRUCTION.
 - THE CONTRACTOR IS TO NOTIFY ALL UTILITY COMPANIES AND AUTHORITIES PRIOR TO ANY EXCAVATION AND ASCERTAIN LOCATIONS OF UNDERGROUND SERVICES.
 - THE CONTRACTOR IS TO REINSTATE ALL AREAS AND ITEMS DAMAGED AS A RESULT OF CONSTRUCTION ACTIVITY.
 - THE CONTRACTOR IS TO COMPLY WITH ALL PERTINENT CODES AND BY-LAWS.
 - THE CONTRACTOR IS TO MAINTAIN A POSITIVE SURFACE RUN-OFF THROUGHOUT THE ENTIRE CONSTRUCTION PERIOD.
 - THE LANDSCAPE ARCHITECT IS NOT RESPONSIBLE FOR SUBSURFACE CONDITIONS.
 - THE CONTRACTOR IS TO IDENTIFY ALL EXISTING TREES TO REMAIN ON SITE WITH THE LANDSCAPE ARCHITECT PRIOR TO CONSTRUCTION.
 - THE CONTRACTOR IS TO STAKE THE PROPOSED LOCATION OF ALL PLANT MATERIAL IN CONJUNCTION WITH THE LANDSCAPE ARCHITECT PRIOR TO EXCAVATION.
 - MINIMUM DISTANCES FOR SELECTED DECIDUOUS TREES ARE AS FOLLOWS:
 - BUILDING FOUNDATIONS - 7.5M
 - SIDEWALKS - 1.5M
 - PUBLIC STREETS - 2.5M
 - UNDERGROUND INFRASTRUCTURE - 2.0M
 - ALL TREES WITHIN 1M OF UNDERGROUND UTILITY TRENCHES ARE TO BE EXCAVATED BY HAND.
 - REMOVE ALL PROTECTIVE WRAPPING FROM TREE TRUNKS AFTER INSTALLATION.
 - STAKING OF TREES SHALL ONLY BE PERFORMED IF NECESSARY.
 - ENSURE THAT MULCH IS PULLED BACK A MINIMUM DISTANCE OF 75MM FROM BASE OF TREE TRUNK.



CLIENT
BULAT HOMES
11 GIFFORD STREET
Ottawa, ON, K2E 7S3
Tel. 613-723-1008

CONSULTANTS
CIVIL ENGINEERS: **EXP SERVICES INC.**
2650 QUEENSVIEW DRIVE, UNIT 100
Ottawa, ON, K2B 8H6
Tel. 613-688-1899

No.	Issue	Date	Author	DR	CK
2	REVISED PER NEW SITE PLAN	09/09/2024	ML	JL	
1	ISSUED FOR DISCUSSION AND REVIEW	04/19/2022	ML	JL	

JAMES B. LENNOX & ASSOCIATES INC.
LANDSCAPE ARCHITECTS
3332 CARLING AVE. OTTAWA, ONTARIO K2H 5A8
Tel. (613) 722-5168 Fax. (866) 343-3942

PROJECT
BOYD STREET SUBDIVISION
166 BOYD STREET, CARLETON PLACE ON

DRAWING
LANDSCAPE PLAN

STAMP

SCALE
AS SHOWN

START DATE
APRIL 2022

PROJECT NO.

PROJECT NORTH

DRAWING NO.
L.1

PLOT SIZE ARCH-D