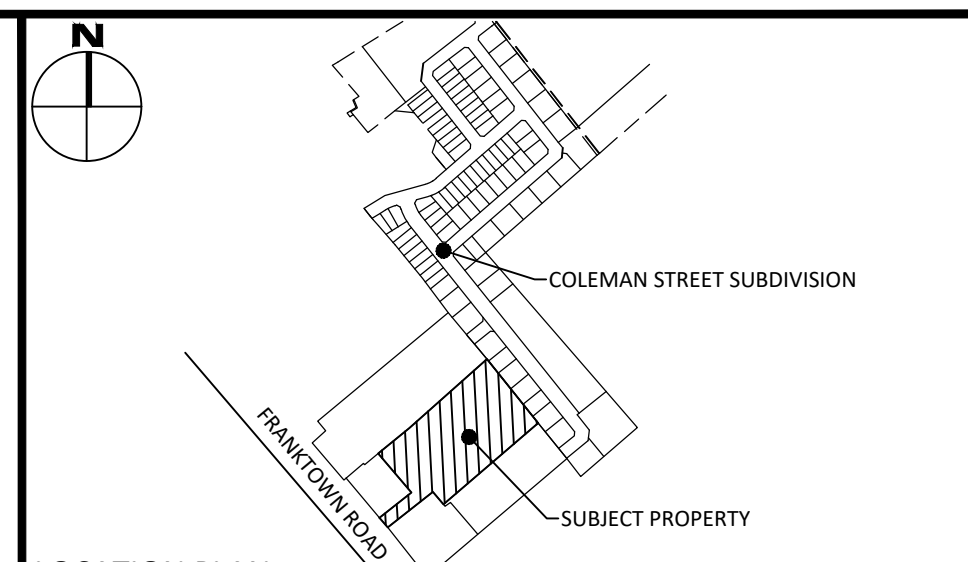
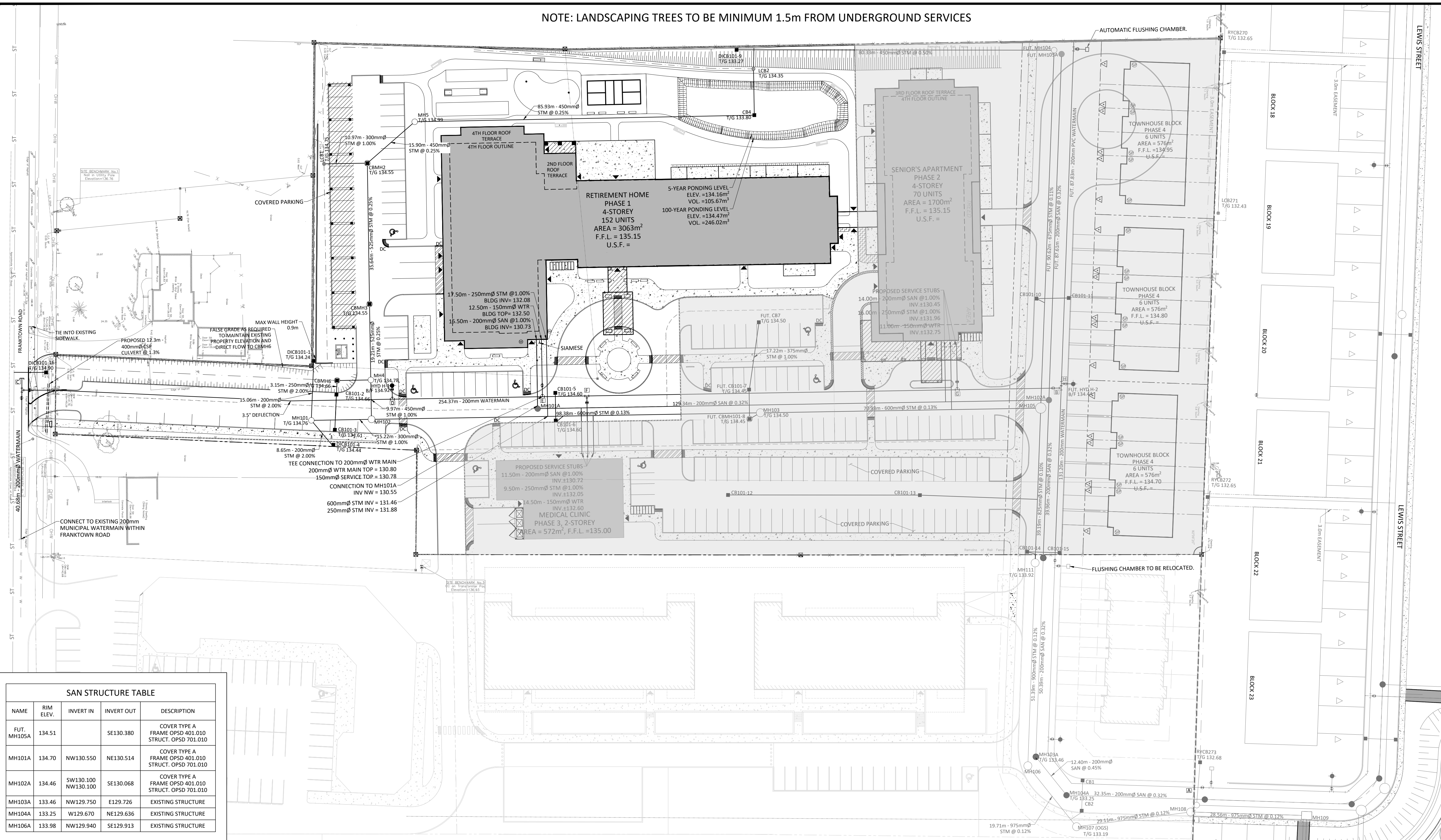


NOTE: LANDSCAPING TREES TO BE MINIMUM 1.5m FROM UNDERGROUND SERVICES



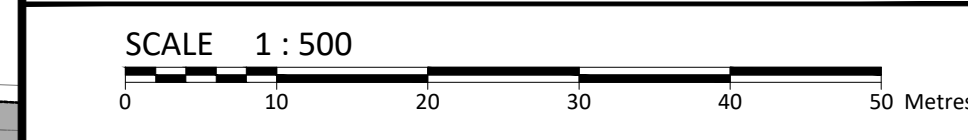
LEGEND

DC	BARRIER CURB	○	SILT FENCE BARRIER (AS PER OPSD 219.130)
—	MOUNTABLE CURB	⊗	STRAW BALE CHECK DAM (AS PER OPSD 219.180)
—	EASEMENT	○/H	SEDIMENT CONTROL DEVICE
—	ASPHALT	⊙	BUILDING ENTRANCE OVERHEAD DOOR
—	RETAINING WALL	⊙	REMOTE WATER METER
—	CONCRETE SIDEWALK	⊙	WATER METER
—	PAVING STONE	⊙	MISC. ROCK BOULDER
—	STORM MANHOLE	⊙	SEDIMENT CONTROL DEVICE
—	CATCHBASIN OR DITCH INLET	⊙	FUTURE INFRASTRUCTURE
—	LANDSCAPE CATCHBASIN	⊙	SUMP PUMP
—	SANITARY MANHOLE	⊙	
—	PERFORATED PIPE IN SWALES	⊙	
—	WATER VALVE/CHAMBER	⊙	
—	FIRE HYDRANT	⊙	
—	CENTRELINE OF SWALE	—	
—	SLOPING AT 3:1 (UNLESS SPECIFIED)	—	
—	PROPOSED ELEVATION	—	
—	EXISTING ELEVATION	—	
—	SWALE ELEVATION	—	
—	TOP OF WALL ELEVATION	—	
—	BOTTOM OF WALL ELEVATION	—	
—	EMERGENCY OVERLAND FLOW ROUTE	—	
—	AREA DRAIN	—	
—	METER/REMOTE METER	—	
—	DOWNSPOUT	—	

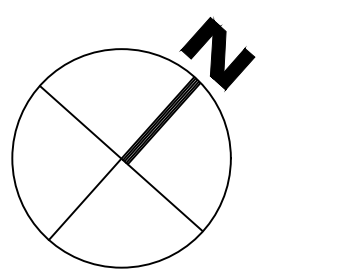
FOR REVIEW ONLY
NOT FOR CONSTRUCTION

7	ISSUED FOR REVIEW	JUN. 03, 2024
6	ISSUED FOR REVIEW	MAR. 21, 2024
5	ISSUED FOR CIVIL ADDENDUM #1	MAR. 09, 2023
4	ISSUED FOR TENDER	FEB. 24, 2023
3	ISSUED FOR PRELIMINARY COSTING	JAN. 13, 2022
2	ISSUED FOR PHASE 1	JUNE 22, 2022
1	ISSUED FOR REVIEW	MAR. 25, 2022
No.	Revisions	Date

Check and verify all dimensions before proceeding with the work. Do not scale drawings.



McINTOSH PERRY



Client: DR NEEL CHADHA
727 BUNCHERRY WAY
OTTAWA, ON K1T 0J8

Project: 347 FRANKTOWN ROAD
CARLETON PLACE, ONTARIO

Drawing Title: SITE SERVICING PLAN

Scale:	1:500	Project Number:	CCO-22-0025
Drawn By:	N.V.	Checked By:	R.F.
Designed By:	N.V.	Drawing Number:	C102

SAN STRUCTURE TABLE

NAME	RIM ELEV.	INVERT IN	INVERT OUT	DESCRIPTION
FUT. MH105A	134.51		SE130.380	COVER TYPE A FRAME OPSD 401.010 STRUCT. OPSD 701.010
MH101A	134.70	NW130.550	NE130.514	COVER TYPE A FRAME OPSD 401.010 STRUCT. OPSD 701.010
MH102A	134.46	SW130.100 NW130.100	SE130.068	COVER TYPE A FRAME OPSD 401.010 STRUCT. OPSD 701.010
MH103A	133.46	NW129.750	E129.726	EXISTING STRUCTURE
MH104A	133.25	W129.670	NE129.636	EXISTING STRUCTURE
MH106A	133.98	NW129.940	SE129.913	EXISTING STRUCTURE

STORM STRUCTURE TABLE

NAME	RIM ELEV.	INVERT IN	INVERT OUT	DESCRIPTION
CB4	133.80	NW132.200	SW132.185	COVER OPSD 400.020 FRAME OPSD 400.020 STRUCT. OPSD 705.010
CB101-2	134.66	SE132.352	NW132.033	COVER OPSD 400.020 FRAME OPSD 400.020 STRUCT. OPSD 705.010
CB101-3	134.61		NW132.548	COVER OPSD 400.020 FRAME OPSD 400.020 STRUCT. OPSD 705.010
CB101-5	134.60		SE133.070	COVER OPSD 400.020 FRAME OPSD 400.020 STRUCT. OPSD 705.010
CB101-6	134.60	NW132.930	N132.870	COVER OPSD 400.020 FRAME OPSD 400.020 STRUCT. OPSD 705.010 C/W ORIFICE
CB101-10	134.28	NE131.940	E131.675	COVER OPSD 400.020 FRAME OPSD 400.020 STRUCT. OPSD 705.010
CB101-11	134.30		SW132.063	COVER OPSD 400.020 FRAME OPSD 400.020 STRUCT. OPSD 705.010
CB101-12	134.79		NE131.797	COVER OPSD 400.020 FRAME OPSD 400.020 STRUCT. OPSD 705.010

CB101-13	134.37	SW131.700	NE131.669	COVER OPSD 400.020 FRAME OPSD 400.020 STRUCT. OPSD 705.010 C/W ORIFICE	FUT. CB7	134.50	SE133.102	COVER OPSD 400.020 FRAME OPSD 400.020 STRUCT. OPSD 705.010	
CB101-14	133.91	NE132.350	NE131.691	COVER OPSD 400.020 FRAME OPSD 400.020 STRUCT. OPSD 705.010	FUT. CB101-7	134.45	NW132.930	SE132.900	COVER OPSD 400.020 FRAME OPSD 400.020 STRUCT. OPSD 705.010
CB101-15	133.91		SW132.513	COVER OPSD 400.020 FRAME OPSD 400.020 STRUCT. OPSD 705.010 C/W ORIFICE	FUT. CBMH101-6	134.45	NW132.830	N131.481	COVER OPSD 400.070 FRAME OPSD 401.010 STRUCT. OPSD 701.010
CBMH2	134.55	SW132.310 N131.890	SE131.839	COVER OPSD 400.070 FRAME OPSD 401.010 STRUCT. OPSD 701.010	FUT. MH104	134.58	SW131.390	SE131.364	COVER TYPE B FRAME OPSD 401.010 STRUCT. OPSD 701.010
CBMH3	134.55	NW131.750	SE131.728	COVER OPSD 400.070 FRAME OPSD 401.010 STRUCT. OPSD 701.010	LCB1	134.75		NE132.420	AS PER CITY OF OTTAWA STANDARD DRAWING S31
CBMH6	134.66	SE131.970	NE131.911	COVER OPSD 400.070 FRAME OPSD 401.010 STRUCT. OPSD 701.010	LCB2	134.35		SE132.317	AS PER CITY OF OTTAWA STANDARD DRAWING S31
DICB101-1	134.24		SE132.301	COVER OPSD 400.020 FRAME OPSD 400.020 STRUCT. OPSD 705.010	MH4	134.78	NW131.680 SW131.740	SE131.680	COVER TYPE B FRAME OPSD 401.010 STRUCT. OPSD 701.010 C/W ORIFICE
DICB101-4	134.44		W131.943	COVER OPSD 400.020 FRAME OPSD 400.020 STRUCT. OPSD 705.010	MH5	134.99	NE131.970	S131.930	COVER TYPE B FRAME OPSD 401.010 STRUCT. OPSD 701.010
DICB101-9	133.27		NE131.792	COVER OPSD 400.020 FRAME OPSD 400.020 STRUCT. OPSD 705.010	MH101	134.76	NW132.000 E131.770	NE131.712	COVER TYPE B FRAME OPSD 401.010 STRUCT. OPSD 701.010
DICB101-16	134.90		SW132.900	COVER OPSD 400.020 FRAME OPSD 400.020 STRUCT. OPSD 705.010	MH102	134.73	NW131.580 SW131.560	NE131.538	COVER TYPE B FRAME OPSD 401.010 STRUCT. OPSD 701.010

WATER COVER TABLE

LOCATION	STATION	FINISHED GRADE	TOP OF PIPE	COVER
A - CAP	0+100.00	133.30	130.90	2.40
45° BEND	0+131.55	133.35	130.95	2.40
45° BEND	0+141.94	133.37	130.97	2.40
CAP	0+223.63	133.70	130.30	2.40
B-200X200 TEE	1+100.00	134.12	131.72	2.40
VALVE	1+101.00	134.15	133.75	2.40
VALVE	1+494.00	135.90	133.50	2.40
200X200 TEE	1+496.29	135.89	133.49	2.40
C-CAP	2+100.00	135.95	133.55	2.40
VALVE	2+103.60	135.99	133.59	2.40
EK. CAP	2+142.30	136.07	133.67	2.40
D - 200X150 TEE	3+100.00	134.87	132.47	2.40
VALVE	3+102.00	135.05	132.65	2.40
HI	3+103.00	135.05	132.65	2.40
E - 200X150 TEE	4+100.00	134.59	130.80	3.90
VALVE	4+102.00	134.80	132.40	2.40
BLDG	4+114.50	134.90	132.50	2.40
F-200X150 TEE	5+100.00	134.60	132.20	2.40
VALVE	5+101.00	134.59	132.19	2.40
BLDG	5+116.00	134.70	132.30	2.40
G - 200X150 TEE	6+100.00	133.30	130.90	2.40
VALVE	6+101.00	133.35	130.95	2.40
BLDG	6+112.50	133.37	130.97	2.40
H - 200X150 TEE	7+100.00	134.01	131.61	2.40
VALVE	7+108.75	134.35	131.95	2.40
H-2	7+112.23	134.37	131.97	2.40
I - 200X150 TEE	8+100.00	133.50	131.10	2.40
VALVE	8+106.25	133.55	131.15	2.40
H-3	8+108.25	133.70	131.30	2.40

FILENAME: U:\Drawings\01 Project - Proposed 347 Franktown Rd\CCO-22-0025\Drawings\01 CCO-22-0025 Presentation.dwg
LAST SAVED: Monday, June 03, 2024 1:51:54 PM BY: F.Walsh
LAST PLOTTED: Monday, June 03, 2024 1:51:54 PM BY: F.Walsh