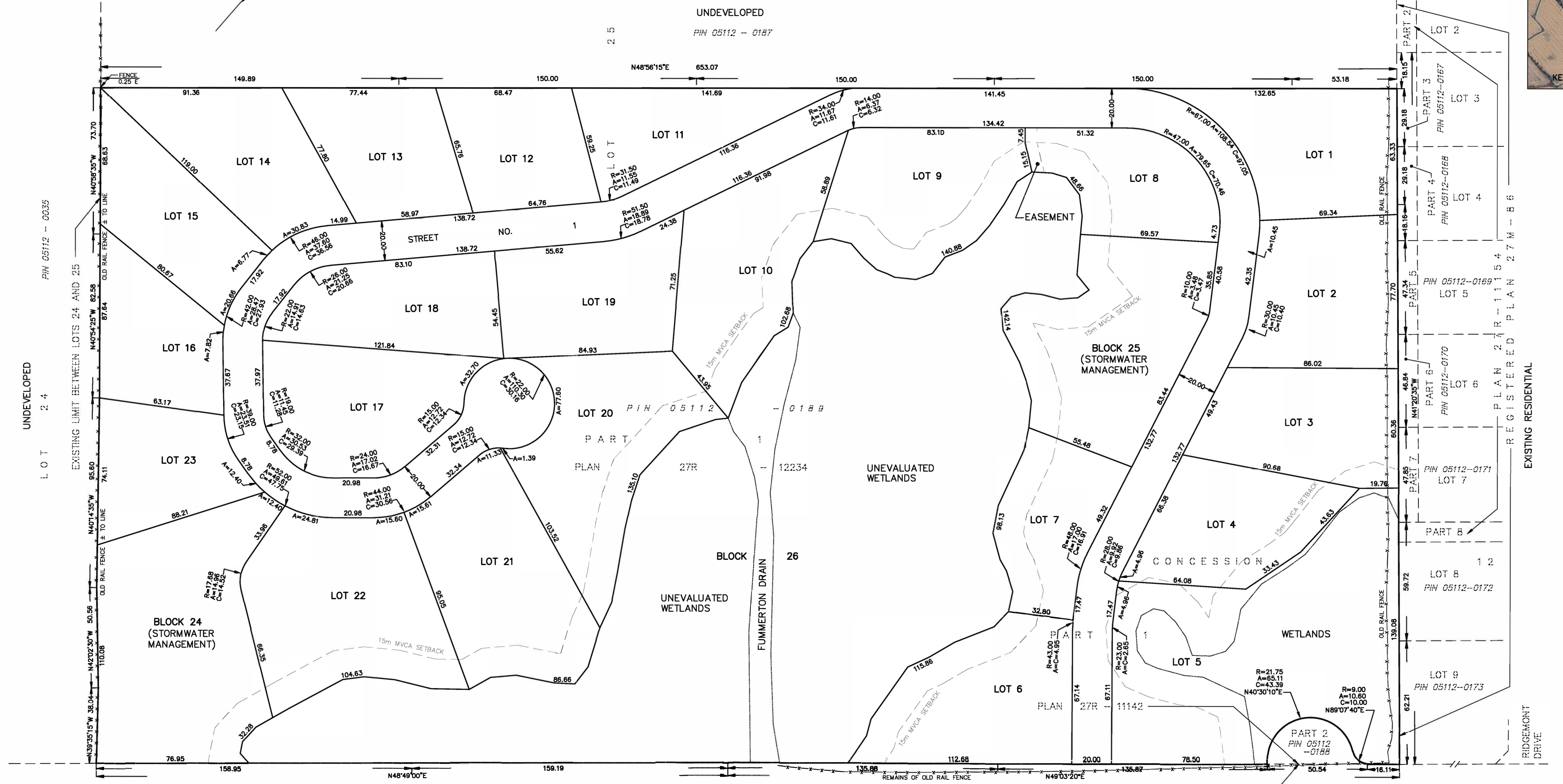
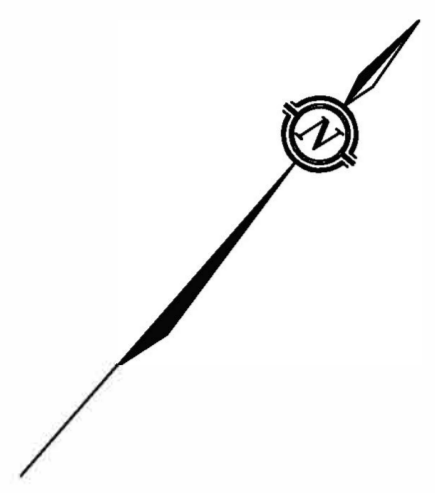


METRIC  
DISTANCES AND ELEVATIONS SHOWN ON THIS PLAN ARE IN METRES  
AND CAN BE CONVERTED TO FEET BY DIVIDING BY 0.3048



DRAFT PLAN OF SUBDIVISION OF  
PART OF LOT 25  
CONCESSION 12  
TOWNSHIP OF BECKWITH  
COUNTY OF LANARK  
SCALE 1 : 1000  
0 10 20 50 100 metres  
FAIRHALL, MOFFATT & WOODLAND LIMITED  
ONTARIO LAND SURVEYORS

**OWNER'S AUTHORIZATION**  
I HEREBY AUTHORIZE THE SUBMISSION OF THIS PLAN FOR APPROVAL.  
DOUGLAS LANDING DEVELOPMENTS  
DATE \_\_\_\_\_ DR. GILLIAN ESPRIE (PRESIDENT)

**SURVEYOR'S CERTIFICATE**  
I HEREBY CERTIFY THAT THE BOUNDARIES OF THE LANDS TO BE SUBDIVIDED AS SHOWN ON THIS PLAN AND THEIR RELATIONSHIP TO ADJOINING LANDS ARE ACCURATELY AND CORRECTLY SHOWN.  
DATE \_\_\_\_\_ JOHN H. GUTRI (ONTARIO LAND SURVEYOR)

- SECTION 51 (17) OF THE PLANNING ACT.**
- a) SHOWN ON PLAN
  - b) SHOWN ON PLAN
  - c) SHOWN ON PLAN
  - d) 19 LOTS FOR SINGLE FAMILY HOMES (2 STOREYS EACH)  
4 LOTS FOR ATTAINABLE HOUSING  
WETLAND  
STORMWATER MANAGEMENT
  - e) SHOWN ON PLAN
  - f) SHOWN ON PLAN
  - g) SHOWN ON PROJECT SITE PLAN
  - h) WATER SUPPLY WILL BE FROM WELLS AS SHOWN ON CONCEPT PLAN BY P2 CONCEPTS DATED JAN. 13, 2025. ALSO SEE HYDROLOGICAL REPORT BY PINCHIN LTD. DATED JAN. 13, 2025.
  - i) SEE GEOTECHNICAL INVESTIGATION REPORT BY PINCHIN LTD. DATED JAN. 21, 2025.
  - j) SEE GRADING AND DRAINAGE PLAN BY TATHAM ENGINEERING LIMITED DATED JAN. 13, 2025.
  - k) FIRE PROTECTION, POLICING AND GARBAGE COLLECTION ARE AVAILABLE.
  - l) NONE REGISTERED

SITE AREA = 22.181 Ha.

© COPYRIGHT 2024. REPRODUCTION, ALTERATION OR DISTRIBUTION OF THIS PLAN WITHOUT THE WRITTEN CONSENT OF FAIRHALL, MOFFATT & WOODLAND LIMITED IS PROHIBITED.

<b>Fairhall Moffatt &amp; Woodland</b> L I M I T E D ONTARIO LAND SURVEYORS Surveying and Land Information Services 100-800 TERRY FOX DRIVE, KANATA, ONTARIO K2L 4S6 TEL: (613) 591-2260 FAX: (613) 591-1495 www.fmw.com.ca	JOB No. AC13300
	E 337908, N 5004285
	REFERENCE No. 226 - 12 BECKWITH
	S:\085\AC13300\085\ac133_draft-plan.dwg (kg)